



# Easy UPS 3-Phase Modular

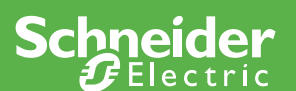
Business continuity made easy  
with modular design

50-250 kW (400 V)



[se.com/ups](https://se.com/ups)

Life Is On



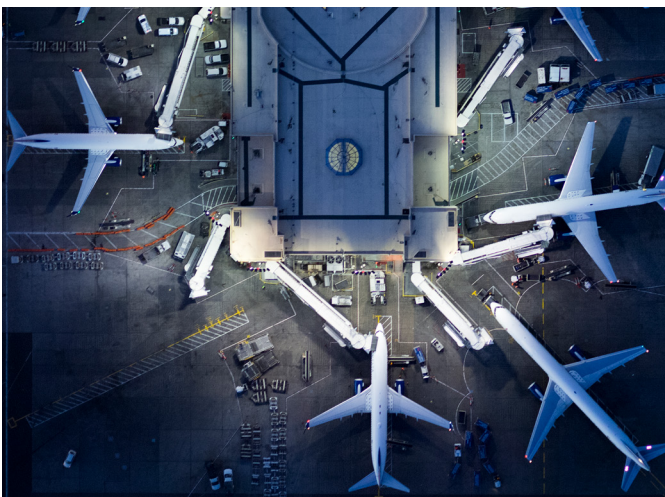
# Scalability made easy

The Easy UPS 3-Phase Modular Uninterruptible Power Supply (UPS) delivers robust power protection and high availability in a cost-optimized, 50-250 kW 400V package ideal for small and medium data centers and other business-critical applications.

Easy UPS 3-Phase Modular is easy to select, quote, stock, install, scale, and maintain. It features a modular design with Live Swap in a compact, one-cabinet footprint. Its scalability enables you to pay-as-you grow, optimizing capital investment with competitive acquisition costs. Buy the power modules you need up-front, and enjoy optimized operating efficiency, then add power modules with third-party verified Live Swap as demand grows. The modular design also enables N+1 internal redundancy, which increases the system's availability with no extra footprint. Compatibility with Galaxy Lithium-ion Battery Cabinets delivers compact, long-life energy storage.

Smart Power Test (SPoT) Mode lowers the cost of site acceptance testing by eliminating the need for an expensive load bank. Easy UPS 3-Phase Modular is EcoStruxure™-connected to give you peace of mind anytime, anywhere, and start-up service is included to optimize your system's performance, quality, and safety, making the offer more cost effective.

With Live Swap, modular design, and robust reliability, Easy UPS 3-Phase Modular is the easy choice for your business continuity.



# Features and benefits



## Easy

Simplify every step of the deployment process with the UPS that is easy to select, quote, stock, install, scale, and maintain.



## Increase availability with no extra footprint

One extra power module for N+1 internal redundancy delivers ultra-high availability with no footprint penalty.



## Optimized investment

Tailor the easy-to-scale UPS to your site's needs to reduce your capital expenditure and optimize UPS performance.



## Compact IT rack footprint

Free up space for revenue-generating equipment; the 600 mm wide rack looks great in the data center or electrical room.



## Innovative Live Swap

Keep your load protected, your business running, and your employees safer.



## EcoStruxure IT

Monitor, manage, and model your IT infrastructure, and get service support, anytime, anywhere.\*

\* Contact your local representative for availability.

## Well-suited for a wide range of data center and industrial applications



### Data centers

- Small and medium data centers
- Edge computing



### Telecommunications

- Public switches
- Transmission equipment
- On-premise equipment



### Commercial buildings

- Retail/office space
- Manufacturing facilities



### Retail

- Technical rooms in shopping malls or branch offices



### Transportation

- Airports
- Tunnels
- Railway equipment



### Healthcare

- Radiology and imaging equipment
- Operating rooms and Intensive Care Units
- Emergency power systems



### Process automation

- Factory control systems



### Green Premium Certified

Sustainable business performance, by design.

Learn more:

[www.se.com/en/work/support/green-premium/](http://www.se.com/en/work/support/green-premium/)

# Robust design

## Robust design supports both IT and non-IT environments

- Fault-tolerant design ensures continuous protection in critical circumstances
- Maximum short circuit rating: 35kAIC
- Designed to perform in harsh environments with its high-quality air filter
- Suited for humid environments thanks to **conformal coating**
- **Backfeed protection** options available
- Top cable entry (bottom cable entry with optional bottom entry cabinet)
- No side clearance required for service



## Higher availability with modularity

- One extra power module for **N+1 internal redundancy** keeps your load protected and with no extra footprint
- Optimized uptime with wide input voltage tolerance window (-20% to +15%)
- With **Live Swap**, it is simple and fast to add, replace, or remove power modules, display interface, and static switch
- Install up to 4 UPSs in parallel for capacity or redundancy



## Scalability and performance with optimized capex

- **Unity Power Factor (PF=1)** allows for right-sizing protection to real IT needs
- Seamlessly integrates into electrical environment:
  - Single and dual mains supported
  - Copper cables suitable for TN installation
- Increase onsite reliability and reduce start-up costs by using the Smart Power Test feature (SPoT)
  - Easily test the UPS at full power
  - Reduce risk to load and improve product quality



# Future proof your data center

## Expand power with no scheduled downtime and no extra footprint with Live Swap

Easy UPS 3-Phase Modular and scalable design supports the Live Swap of power modules, optimizes your up-front capital investment, provides you with power continuity, and gives you more flexibility to expand power and pay as you grow.

### Optimize your investment over time

With modular, scalable design, it is easy to right-size your power protection and redundancy from day one. This maximizes your operating efficiency and sustainably minimizes your energy consumption.

### Scale fast with no scheduled downtime

Modular design and Live Swap make just-in-time data center expansion effortless, with no scheduled downtime, enhancing business continuity.

### Keep your employees safer

With Live Swap, it is simple and fast to add, replace, or remove modules while the UPS is online and fully operational, increasing protection for your employees by reducing the risk of potential arc flash.

### Scale and pay as you grow

Scale power instantly with no scheduled down time in 50 kW increments from 50-250 kW as your power requirements evolve.



## Live Swap: the new frontier for modularity, redundancy, and employee protection

Easy UPS 3-Phase Modular with Live Swap is a pioneering innovation, driven by Schneider Electric's strong safety culture, delivering a touch-safe design through the entire process of adding or replacing the modular components of the Easy UPS 3-Phase Modular while it remains online.

This innovative capability enables fast and simple insertion and replacement of the power and bypass modules in the UPS, while the UPS is online and fully operational, without having to transfer the UPS to maintenance bypass or to battery operation and with increased protection for your employees.

Easy UPS 3-Phase Modular has been designed to reduce the risk of shock and potential arc flash during the insertion or removal of power and bypass modules, as well as to ensure touch safety throughout the entire Live Swap operation. In practical terms, the UPS modules can be added or replaced while the UPS is online, and the energy incident levels are kept below 1.2 cal/cm<sup>2</sup>.

The numerous and rigorous tests completed have been witnessed and verified by a recognized third-party laboratory.



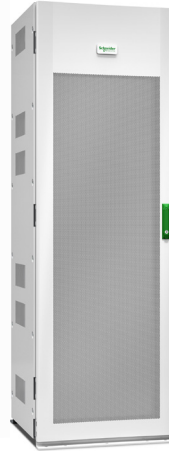
Easy UPS 3-Phase Modular with Live Swap is Schneider Electric's response to national and local electrical safe work practices regulations. For more information, you can read [WP-13, Mitigating Electrical Risk While Swapping Energized Equipment](#).

# Compact, long-life energy storage

## Long-life Galaxy Lithium-ion batteries

As a first mover with a vast installed base, Schneider Electric has developed its own Galaxy Lithium-ion battery solution that also delivers these benefits:

- **Double** your battery life compared with any VRLA battery, optimizing TCO
- Recharge **2–3x faster** than VRLA solutions
- High temperature tolerance
- Simplify and speed up installation with our internal power supply
- Enhance battery safety with three levels of battery management system (BMS)



# Easy to install and service

## Easy installation and start-up

- Lightweight, small footprint
- Everything you need is included – Network Management Card (NMC), Modbus, single and dual mains, air filters, and dry contacts
- Enables standard top cable entry. For bottom cable entry, a Bottom Entry Cabinet (BEC) can be used

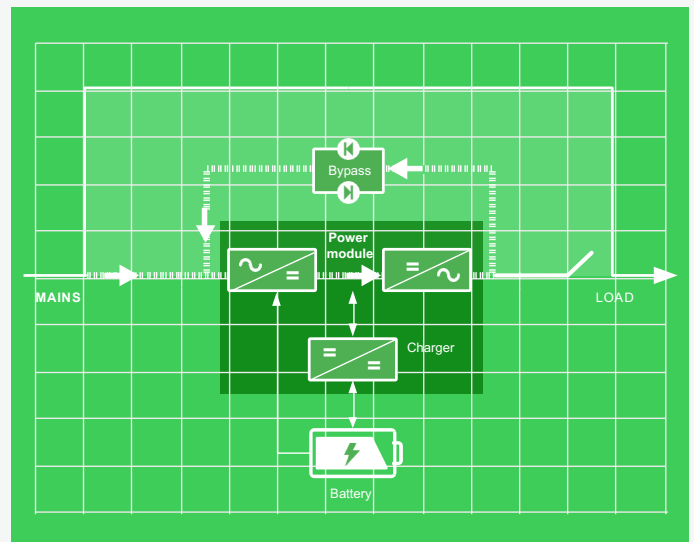
## Easy to maintain and fast to service thanks to its modular architecture and Live Swap design

- Fast mean time to repair thanks to Live Swap modules
- Reduces risk of human error and load drop, and enhances employee protection
  - With Live Swap, it is easy and fast to add, replace, or remove power modules while the UPS is online and fully operational, increasing protection for your employees
  - The UPS self-detects the new power module and automatically updates its configuration settings for more uptime and convenience

## Speed up deployment time and reduce start-up costs by using the Smart Power Test (SPoT) mode before connecting your critical building or facility load

Smart Power Test (SPoT) mode enables the service engineer to test the UPS with full capacity current flow through important components and converters without using a large system input current, and without needing a load bank connected to the system or other system modifications.

- Easy method to test the UPS at full power
- Can be conducted after service, repair, upgrade, or commissioning of UPS installation to verify system is properly installed
- Reduce risk to load and improve product quality
- Significant cost, time, and power savings



# Visibility and peace of mind

## EcoStruxure IT enables resilient, secure, and sustainable data centers and IT environments

Schneider Electric's comprehensive Data Center Infrastructure Management (DCIM) solution, EcoStruxure IT, ensures business continuity by enabling secure monitoring, management, insights, planning, and modeling – whether from a single IT rack to hyper-scale IT – on-premises, in the cloud, and at the edge.



Resilient



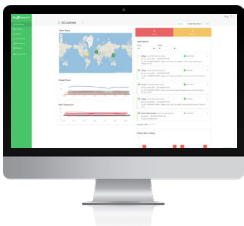
Secure



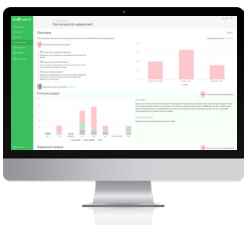
Sustainable

### Easy visibility

Monitoring and management software streamlines data center device management:



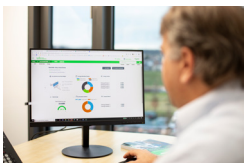
**EcoStruxure IT Expert** provides you a hands-on approach with **cloud-based** monitoring software that synthesizes and analyzes performance and alert data into proactive recommendations and enables wherever-you-go visibility from any device. Try it now: [www.ecostruxureit.com/ecostruxure-it-expert/#trial](http://www.ecostruxureit.com/ecostruxure-it-expert/#trial)



**EcoStruxure Data Center Expert** is a scalable end-to-end **on-premise** monitoring software that collects, organizes, and distributes critical device information, providing a comprehensive view of your company-wide, multi-vendor physical infrastructure.

### 24/7 peace of mind

Digital services proactively monitor your critical devices:

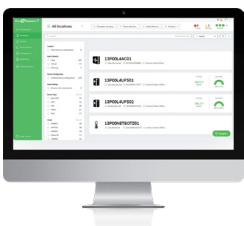


**EcoStruxure Asset Advisor\*** for secure power and cooling provides you a hands-off approach with 24/7 remote monitoring service by the Schneider Electric Connected Services Hub experts.

We monitor and troubleshoot, you relax.

### Operations, optimized

Planning and modeling software transforms data into performance insights:



**EcoStruxure IT Advisor** is a data center infrastructure planning and modeling solution that provides Data Center Managers in large enterprises and colocation data centers with full insights into their infrastructure to improve profitability, sustainability, and resiliency.

### Comprehensive on-site services

#### Start-up service: included with UPS

- Commission the installation in accordance with manufacturer's recommendations. Ensure optimal system performance from Day 1

#### Schneider Electric-certified installation services

- Expert configuration of your equipment for optimal performance and reliability

#### Maintenance services

- Ensure proper care of your mission-critical applications
- Preventive maintenance and response time upgrades, where available

#### Flexible service plans/ on-site extended warranty

- Hassle-free system maintenance
- Improve uptime at a predictable cost

\*Contact your local representative for availability.

Easy UPS 3-Phase Modular UPS	Features
Nominal power (kW)	50, 100, 150, 200, 250
N+1 power ratings	Up to 250 kW N+1 with no footprint penalty
Topology	Online double conversion
<b>Key features</b>	
Modular elements	Power modules (50 kW/3U), static switch module (250 kW/3U)
Third-party verified Live Swap	Power module, static switch module, control module, display interface
Display	7-inch multi-color touchscreen display
Cabinet type	Standalone, rack style (42U, 19-inch width, APC Raven Black)
Dry contacts	4 configurable input contactors; 5 configurable output contactors
<b>Efficiency</b>	
Double conversion mode	Up to 96%
ECO mode	Up to 99% @ 250 kW
<b>Input</b>	
Input voltage (V)	380 / 400 / 415 V
Input voltage range	380 / 400 / 415 V (-20% to +15%)
Mains input	Single/Dual mains. Single mains by default
Input frequency	40-70 Hz
Input current total harmonic distortion (THDI)	≤ 3% (full linear load)
Input power factor @ 250 kW	> 0.99 @ load > 25%; > 0.95 @ load > 15%
Cable entry	Top (optional bottom cable entry cabinet available)
Maximum input short-circuit level	35 kA (I <sub>cc</sub> )
<b>Output</b>	
Nominal output voltage (V)	380 / 400 / 415 V
Load power factor	PF = 1 @ 40 °C
Load power factor compatibility	0.7 leading to 0.7 lagging without derating
Voltage regulation	+/- 1% (symmetrical load); +/- 3% (asymmetrical load)
Frequency	50 / 60 Hz (+/-0.1% @ free running)
Overload capacity: normal or bypass operation	1 minute @ 150%; 10 minute @ 125% at 400 V/40 °C
Overload capacity: battery operation	1 minute @ 125%
Output THDU (linear load)	1% @ full load
Output THDU (non-linear load)	3% @ full load
<b>Batteries</b>	
Type	VRLA or Lithium-ion
DC Bus / Number of battery blocks	40-48 with full load
Backup time	Up to 2-4 hours
Charging power	5-60% of full power of power module (user-selectable) @ 400V
Number of supported battery breakers	10
Temperature monitoring	Yes (4 sensors, including one internal temperature sensor)
Battery runtime estimation	Yes
Temperature compensation charging	Yes
Battery deep discharge protection	Yes
<b>Environment</b>	
Storage temperature	-2 5°C to 55 °C - without batteries
	70 °C for storage with 16 hours - without batteries
Operating temperature	-15 °C to 40 °C - with batteries
	0 °C to 40 °C



Easy UPS 3-Phase Modular UPS	Features
<b>Environment (continued)</b>	
Humidity	0% to 95% non-condensing
Operating elevation	1000 m @ 100% load; up to 3000 m with derating as per IEC 62040-3
Audible noise at 1m from unit	68 dB <= 70% load; 74 dB at full load
Ingress protection (IP) class	IP20
Dust	Supports harsh environments. Pollution degree 2 (IEC 62040). Air filter included.
Conformal Coating	On PCBA
<b>Mechanical</b>	
Size (HxWxD)	1991 x 600 x 850 mm
Weight (unpacked)	216-356 kg (one internal switch); 251-391 kg (four internal switches)
<b>Communication</b>	
Communication interface	Network Management card (included). Ethernet, SNMP, Modbus RS485 or TCP/IP, BACnet. Compatible with EcoStruxure Data Center Expert.
<b>Standards and approvals</b>	
Safety	IEC 62040-1
Performance	IEC 62040-3
EMC	IEC 62040-2 cat C3
Surge	IEC61000-4-5
Approvals	CE, CB Report
Environmental	RoHS, REACH, WEEE, Green Premium, PEP
Transportation	IEC TR 60721-4-2, Level 2M2
Live Swap	Qualified by TÜV Rheinland
Warranty	1 year

Options and accessories		
Bottom Entry Cabinet	Galaxy Lithium-ion Battery Cabinets	Seismic Kit
Empty Battery Cabinet	Maintenance Bypass Panel	Backfeed Kit
Battery Breaker Box	Depth Adapter (1100/1200mm)	Parallel Communications Kit
Battery Breaker Kit	Battery Temperature Sensor	
Classic Battery Cabinet	Network Management Card	

[se.com/ups](https://se.com/ups)

Life Is On

**Schneider**  
Electric

### About Schneider Electric

Schneider's purpose is to empower all to make the most of our energy and resources, bridging progress and sustainability for all. We call this Life Is On. Our mission is to be your digital partner for Sustainability and Efficiency. We drive digital transformation by integrating world-leading process and energy technologies, end-point to cloud connecting products, controls, software and services, across the entire lifecycle, enabling integrated company management, for homes, buildings, data centers, infrastructure, and industries. We are the most local of global companies. We are advocates of open standards and partnership ecosystems that are passionate about our shared Meaningful Purpose, Inclusive and Empowered values.

[www.se.com](https://www.se.com)

### Schneider Electric SE

35 Rue Joseph Monier  
92500 Rueil Malmaison – France

©2023 Schneider Electric. All Rights Reserved.

Schneider Electric | Life Is On is a trademark and the property of Schneider Electric SE, its subsidiaries, and affiliated companies. • 998-23018400